

DIXIE CHOPPER®

XCALIBER

MODELS:

NEW

3160 31hp, 60" Deck

NEW

3360EFI 33hp, 60" Deck**3566** 35hp, 66" Deck**3574** 35hp, 74" Deck**3574EFI** 35hp, 74" Deck**3674** 36hp, 74" Deck

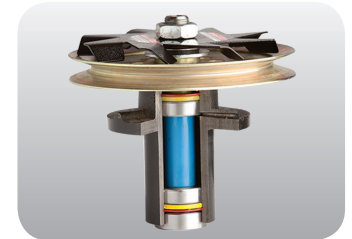
XCaliber 3574 shown*

THE CHOICE FOR LANDSCAPING PROS.

Professional commercial contractors across the U.S. have come to depend on the **XCaliber** for its legendary performance. Dixie Chopper's flagship mower features:

- **Pure Power** – Models powered with Kawasaki® FX, Vanguard®, or fuel efficient Kohler® EFI engines.
- **New 60" X2 Wind Tunnel Deck** – The industry's best cutting deck design is now available in a popular 60" deck width and retains the Wind Tunnel design with the industry leading 2-inch blade overlap.
- **Springer Forks** – Provide ultimate comfort and performance, making the XCaliber one of the smoothest riding industrial mowers on the market today.
- **Productivity** – Our drivetrain configuration increases ground speed up to 13 mph to mow over 6 acres per hour.
- **New Deck Lift System** – Offers better ergonomics and assisted lifting for operator convenience.
- **Most Lifetime Warranties** – Worry-free lifetime warranties on the frame, stainless steel, front forks, steering levers, and front caster bearings

*Actual production model may vary

**Total Comfort** – Suspension seat and Springer Forks for best quality ride.**Two 7 Gallon Fuel Tanks** – More fuel capacity eliminates frequent fill-ups.**Pumps & Wheel Motors** – Stronger transmissions for extended system life.**Spindle Fans** – Cleans the top of the deck and keeps spindles and belts cool.**X2 "Wind Tunnel" Deck** – Increases airflow and reduces build-up inside deck.

5 YEAR
BUMPER-TO-BUMPER
WARRANTY*

*up to 600 hour limited warranty



XCALIBER

	60" Deck		66" Deck	74" Deck		
Model	NEW 3160	NEW 3360EFI	3566	3574	3574EFI	3674
Engine						
Manufacturer	Kawasaki® FX	Kohler® EFI	Kawasaki® FX		Kohler® EFI	Vanguard®
Horsepower	31	33	35		36	
Displacement	999cc	824cc	999cc		993cc	
Air-cleaner	2 stage					
Cooling	Air cooled					
Starter	Electric					
Engine warranty	3 Year					

Drive System						
Pumps	Hydro-Gear® 21cc					
Wheel motors	Parker® DG335					
Ground speed	13 mph					
Parking brake	Automotive Style					
Towing capacity	2000 lbs					

Mower Deck						
Deck size	60"		66"	74"		
Acres/hour	5.2		5.4	6.5		
Cutting height	1.5" - 5"					
OCDC (operator controlled discharge chute)	Standard					
Deck height adjustments	Manual lift, 1/4" increments					
Electric lift	—					
Deck engagement	Ogura® 250 ft-lbs					
Construction	7 ga formed & welded					
Top plate	7 ga bolted (not welded)					
Blades	3 - 21.375" x 2.5"		3 - 23.3" x 2.5"		3 - 26" x 2.5"	
Blade tip speed (approximate)	19,031 Fpm				19,144 Fpm	
Spindle housings	1pc keyless sealed cast iron					
Spindles	1.25" effective diameter machined shaft					
Anti-scalp rollers	6					
Spindle cooling fans	3					
Pulleys	Vented split 3/16" steel deep groove					

General						
Battery	12 Volt, 475cca					
Digital display	Tachometer, voltmeter, service alerts					
Fuel capacity	14 gallons					
Rear tires	25 x 12-12 Grass Master					
Front tires	15 x 6-8					
Frame	Welded 1" x 2" tube, 7 ga formed					
Fenders	Stainless steel					
Floor-pan	Flip-up, steel					
Seat	Suspension seat w/ armrest					
Springer Forks	Standard					

Dimensions						
Overall height	52"				51"	
Overall height (rollbar up)	77"				78"	
Overall width	65"		72"		76"	
Overall length	84"				86"	
Overall length (rollbar down)	101"				102"	
Weight	1390 lbs		1445 lbs		1482 lbs	

DIXIE CHOPPER®
The World's Fastest Lawn Mower.™

6302 E County Road 100 N | Coatesville, IN 46121-9689 | Phone 765.246.7737 | Fax 765.246.6011 | www.dixiechopper.com

Specifications may change as we continuously improve our products. For the latest information and mower specifications, please visit dixiechopper.com or your local Dixie Chopper dealer. Engine horsepower information is provided by the engine manufacturer to be used for comparison only. ©2015 Dixie Chopper. All rights reserved. A division of Jacobsen, A Textron Company.

Part # 700443
REV 01122015