

DIXIE CHOPPER®

MAGNUM HP

MODELS:

- 2244HP** 22hp, 44" Deck
- 2250HP** 22hp, 50" Deck
- 2460HP** 23.5hp, 60" Deck

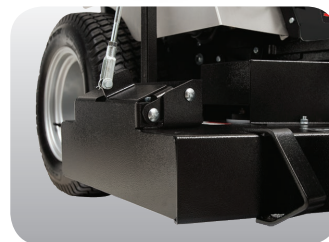


Magnum 2250HP shown*

HEAVY-DUTY FEATURES AT A SURPRISINGLY AFFORDABLE PRICE.

The **Magnum HP** provides the best of both worlds: the durability of a commercial mower at a surprisingly non-commercial price point. Highlights include:

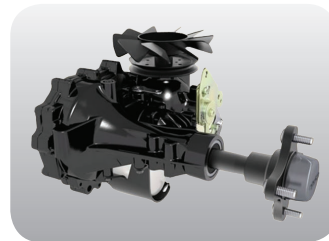
- **Proven Power** – Equipped with the industry preferred Kawasaki® FX engine for trusted reliability and performance.
- **X2 Cutting System** – Offered in three cutting widths (44", 50", and 60"), the X2 Deck combines X-Blade Technology with the industry leading 2 inches of blade overlap to ensure every blade of grass is cut cleanly.
- **Commercial Transmissions** – The Hydro-Gear® ZT-3400 series transaxles are designed for heavy-duty commercial applications and feature an external oil filter for easier maintenance.
- **Complete Discharge Control** – Our operator-controlled discharge chute (OCDC) allows you to switch from normal discharge to blocking the chute on the fly.
- **Total Comfort** – The deluxe seat keeps you comfortable all day long with an extra plush cushion design.



OCDC – Open and close the discharge chute on command.



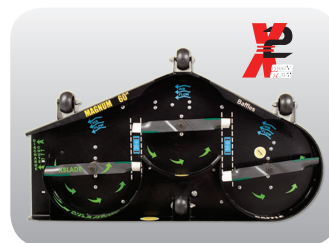
Kawasaki® FX – Trusted performance in commercial applications.



Hydro-Gear® ZT-3400 – Commercial-grade transaxle with serviceable filter.



Heavy-Duty Spindles – Tried and true design for over 25 years.



44", 50", and 60" X2 Cutting System – X-Blade Technology with 2" blade overlap.



*up to 500 hour limited warranty

*Actual production model may vary



MAGNUM HP

	44" Deck	50" Deck	60" Deck
Model	2244HP	2250HP	2460HP
Engine			
Manufacturer	Kawasaki® FX		
Horsepower	22		23.5
Displacement	726cc		
Air-cleaner	2 stage		
Cooling	Air cooled		
Starter	Electric		
Engine warranty	3 Year		
Drive System			
Dual Hydrostatic	Hydro-Gear® ZT-3400		
Ground speed	8 mph		
Parking brake	Integrated in transaxle		
Towing capacity	200 lbs		
Mower Deck			
Deck size	44"	50"	60"
Acres/hour	2.8	3.4	4.1
Cutting height	1.5" - 4.5"		
OCDC (operator controlled discharge chute)	Standard		
Deck height adjustments	Manual lift, 1/4" increments		
Electric lift	Optional		
Deck engagement	Ogura® 150 ft-lbs		
Construction	10 ga formed & welded		
Top plate	7 ga bolted (not welded)		
Blades	3 - 17" x 2.5"	3 - 17.875" x 2.5"	3 - 21.375" x 2.5"
Blade tip speed (approximate)	17,875 fpm		17,399 fpm
Spindles	1.25" effective diameter machined shaft		
Spindle housings	1pc keyless sealed cast iron		
Anti-scalp rollers	2	4	
Pulleys	Vented split 3/16" steel deep groove		
General			
Battery	12 Volt, 300cca		
Digital display	Tachometer, voltmeter, service alerts		
Fuel capacity	8 gallons		
Rear tires	23 x 10.5-12 Grass Master		
Front tires	13 x 5-6		
Frame	Welded 2" x 2" tube, 7 ga formed		
Fenders	Stainless steel		
Floor-pan	Flip-up, steel		
Seat	Deluxe (non-suspension) seat w/ armrest		
Springer Forks	Optional		
Dimensions			
Overall height	49"		
Overall height (rollbar up)	73"		
Overall width	49"	55"	65"
Overall length	80"		
Overall length (rollbar down)	85"		
Weight	824 lbs	844 lbs	924 lbs

DIXIE CHOPPER®
The World's Fastest Lawn Mower.®

6302 E County Road 100 N | Coatesville, IN 46121-9689 | Phone 765.246.7737 | Fax 765.246.6011 | www.dixiechopper.com

Specifications may change as we continuously improve our products. For the latest information and mower specifications, please visit dixiechopper.com or your local Dixie Chopper dealer. Engine horsepower information is provided by the engine manufacturer to be used for comparison only. ©2015 Dixie Chopper. All rights reserved. A division of Jacobsen, A Textron Company.

Part # 700439
REV 01122015